

Melissa Beaudoin/AAFP

SAFETY NET

A community service for family and community safety providing self-control and prevention of violence, abuse, and gang crime activity

(sample image (example only) courtesy AAFP)

Copyright 2004 TETRAD I3 Inc.

The concept of SAFETY NET is extraordinarily simple

Cell phones, especially camera-enabled
and a civilian awareness and watchfulness program
coupled with elementary data collection and analysis
resulting in faster alerts and triggered responses
to emerging, imminent crisis and catastrophe situations
BEFORE

they turn into violence, abuse, and terror

at a cost for implementation of nearly zero \$
with tangible commercial benefits to both the community users and
service providers

SAFETY NET is a remarkable service in concept and action

Easy to learn and use, friendly, a “no brainer”

Hardly anything new to implement on the “tech” side

Serves multiple goals of prevention, circumvention, intervention and first response

Serves family, domestic, community, and state/national security interests

Addresses spouse/child abuse, sexual abuse, gang crime, and organized terrorism (i.e., radical Jihad)

And is a non-profit social program that actually puts money and benefits into the hands of the users and the supplier-sponsors

SAFETY NET is NOT-FOR-PROFIT

But it will make money and pay for itself

It will return back many-fold what the corporate sponsors put in at the beginning

And it attracts and cultivates use and support from the public by given them something of value that they can touch and feel

If this was a for-profit Venture

It would be stupid to not invest in it

But this is even better than merely “for-profit”

Because it WILL SAVE LIVES (maybe yours or your kids’)

This is also a NETWORK



and we Can break this one if we join together

Getting to the ROOTs of family violence, domestic and community abuse and misuse, and the GANG problem

= Reaching to the roots of the “terror” response to problems facing individuals and societies

Prime Cause of Terrorism = Insecurity Needing to Disrupt the Perceived Cause of Insecurity

Prime Countermeasure = Reinforcing Internal (personal, family) Security (not merely more “Security Forces”)

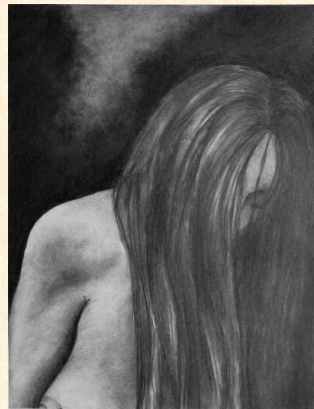
Before we can properly neutralize gang dynamics and subdue the
“appeal” for gangs,
Before we can effectively counter organized terror cadres and
campaigns,
Before we can create sustainable community trends and “attractors”
that are alternates to violence as the solution to individual/family
conflict,
We need to understand the dynamics of Terror and Insecurity in the

Community, Family and the Home

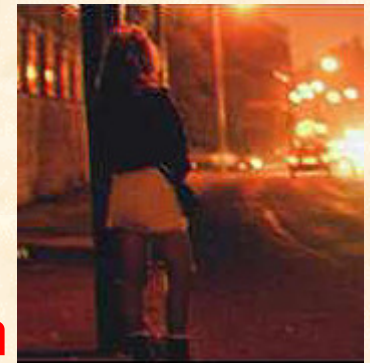
TERRORISM Starts In the HOME

and that is also where it must be addressed

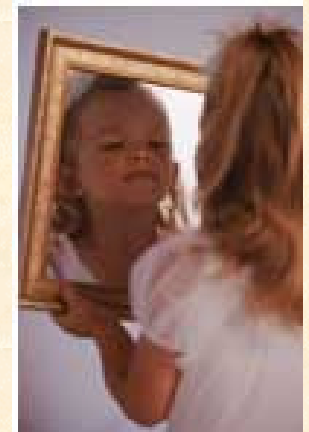
Terrorism as a Response and Solution – and as an Effective Measure - puts on an ethnic and political coat only when there are Numbers and Family Structures and Psychological Dispositions for both the Perpetration and the Reception that come from the Individual and the Home



Spouse and Child Abuse
Sexual Subjugation
Child Molestation
Violence as the First (or Quick) Solution
Venting “the easy way out”
Devaluation of the Person including the Self



CounterTERRORISM
Starts In the
Looking Glass



Now these assertions are hard and will be resisted.

The Basic **Terrakt** Response is biological and in everyone – and must be resisted and overcome

So is the Basic **Panic** Response

So is the Basic **Strike-Back** Response

The Solutions are Psychological,
Social and Communal

But this cannot simply mean More Soft Social Programs,
More Special Panels, and more supercomputers!

The answer is (in this case) “JUST DO IT”



Education-Gaming-Kids-Teens
Civilian Defense Consciousness
“Neighborhood Watch” *a la* Nomad Eyes
Integrated Databases
Expanding the counterterrorist “gene pool”

True Homeland Security starts and ends in the homes
and streets

Acts of social violence – at home, in the street – share a lot in common (formally, mathematically) with acts of natural violence over which we may have no preventive control but plenty of adaptive control. These are all

Emergent Critical Processes

Critical Chaotic Catastrophic Cryptic (“C4”)

These can be Positive or Negative depending upon how you look at things and how you Direct the Energies

Terrorism is where some people, because they are extremely *Pushed Into The Corner* (phenomenologically speaking), are giving Nature a Helping Hand

It is more of an amplification of what we already face, what is unconsciously making us very Insecure as a species, and keeping us On-Edge

People are faced with constant stimuli and close-at-hand “immediacy” experience (accented by the media and internet) of Insecurity in whatever society or strata or generation of life. It is a “built-in” now for growing up on planet Earth.

This makes for a Chronic State of Being “On-Edge”

Bombs in mass transit systems
Blowing up high-rise buildings
Creating epidemics
Disrupting information networks

This is all an extension of what is already happening or close to happening on a much larger scale than ANY terrorist organization could or would even contemplate, but it is what makes terrorist actions so easily effective!

Hurricanes, floods, earthquakes, and other natural ECPs (Emergent Critical Processes) disrupt more lives and infrastructures than all formal terrorism

Individual terrorist acts in the home and street kill, maim or harm more children than Beslan, more families than WTC

There are more *terrorist* acts in a given year than in the history of formal terrorism campaigns in the past century. 37% of all women admitted to Emergency/Trauma centers in the USA are for domestic violence

A viable solution must include prevention, not only circumvention and response, but not only for the Al Qaedas

It must address the whole space of Security and Insecurity starting in the streets and homes

Security Solutions that will make individuals and societies more “immune” to terrorist actions require several PARALLEL actions that must be orchestrated and synchronized together, top-down, and working from the abstract to the specific

Early indicators – signs and signals
Finding the triggers, detonators, and catalysts
Prediction and forecasting
Actual detection of ECPs in progress
Circumvention means and alternatives – fast adaptation
First-response
Triage
Interdiction
Post-event countermeasures and counter-countermeasures

And these MUST apply to multiple types of ECPs because terrorist acts and “natural terrors” are fundamentally similar

If communities and larger infrastructures have better “handles” on dealing with ECPs of all sorts, then this brings better Planning, Adaptation and Response (P-A-R) for terrorist acts as well as the unforeseen natural emergencies

ECPs are asymmetric behaviors, nonlinear, hard to forecast in detail. No sophisticated Virtual World simulation on a supercomputer can be translated into the Street.

The entire P-A-R system will work only when it approaches being almost-everywhere, involving almost-everyone.

Optimal P-A-R must be in the hands of the People as much as possible – it is a Collective Solution

In this sense Osama Bin Ladin was quite correct:

“Your security is in your own hands.”

Attributed to O.b.L. @ 10/27/04

And thus, the concepts and architecture of Nomad Eyes was born, in order to achieve exactly that...

Pre-Incident Buildups:
Photo/audio recording/transmittal
Stronger than “911”
Deterrence, not “after the attack”

Observations:
Suspicious behaviors
Violence in progress
Groups and individuals that don’t “belong” somewhere or
sometime

Smart Analysis:
Auto-assessment
Referral to people
Auto-correlation, inference, and triggered
alerts

Value of Mobile Wireless Portable and Handheld Nets for an Asymmetric, Dynamic Countermeasure System

For suspicious or obvious events of
crime and abuse

Mobile units using both cellular and
wireless internet/intranets

Freeform but adhering to industry
standards

Incorporating the General Public

Incorporating the commercial sector
(advertising and consumer products)

Asynchronous, Atypical, Asymmetric Sensor Fusion

Nomad Eyes™ Architecture and Principles (I)

(Original Design)

Prevention by Detection of Terrakt Planning Operations

Movement of multiple types of components, not only RAD substances

Time-matching and space-matching of logically connective, supportive events

“Sensor Fusion” of the Unordinary (Необычный) Kind -

Tracer RAD readings perhaps not individually remarkable

Photos of suspicious individuals and vehicles that have some “matches”

Exceptional shipping orders, out-of-sequence, special-route, handling

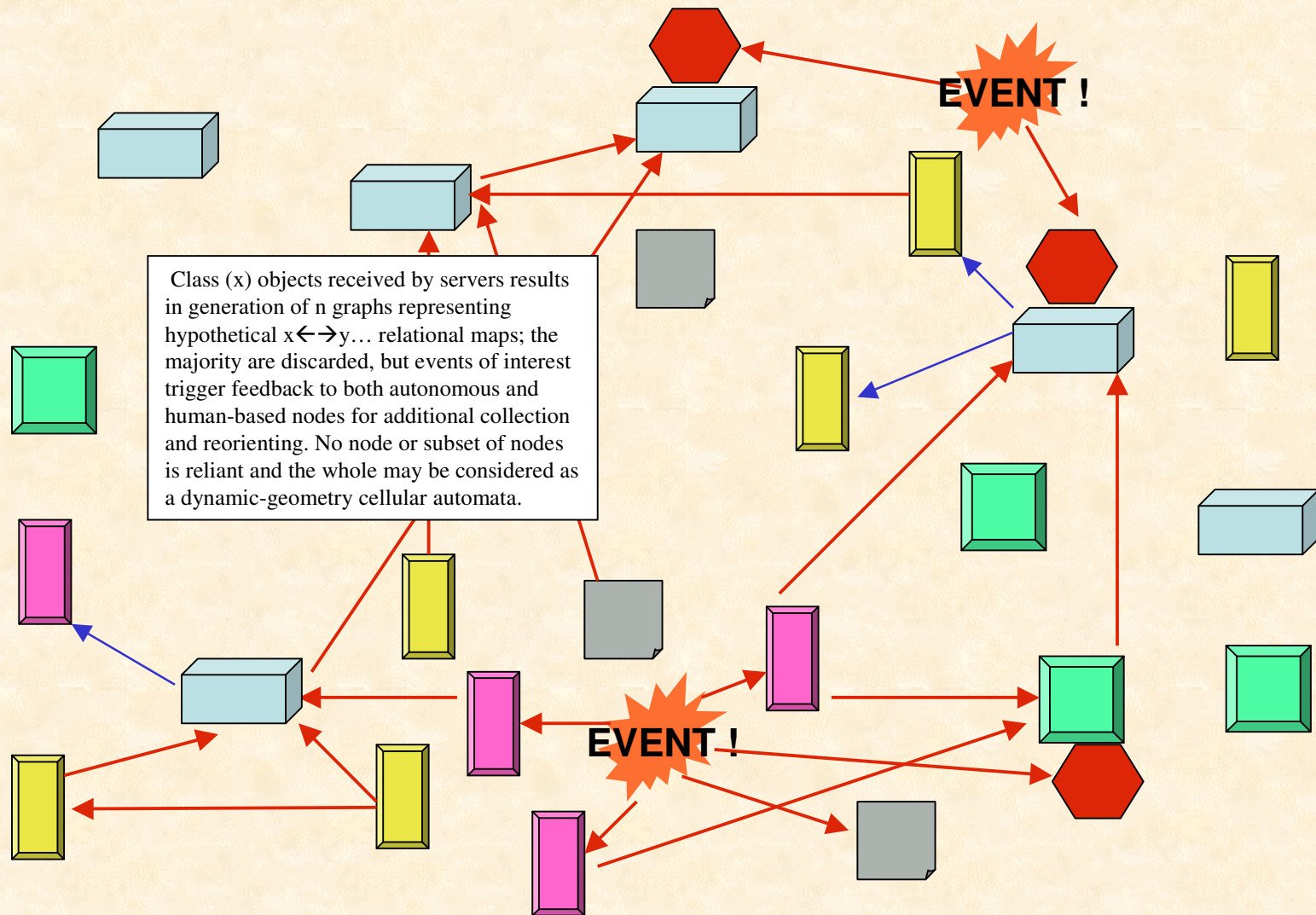
Parallel transit/shipment/transaction of non-contraband components useful
in an RDD

Goal toward Inverse Reasoning and Abductive Assimilation with other KBs / Xsys

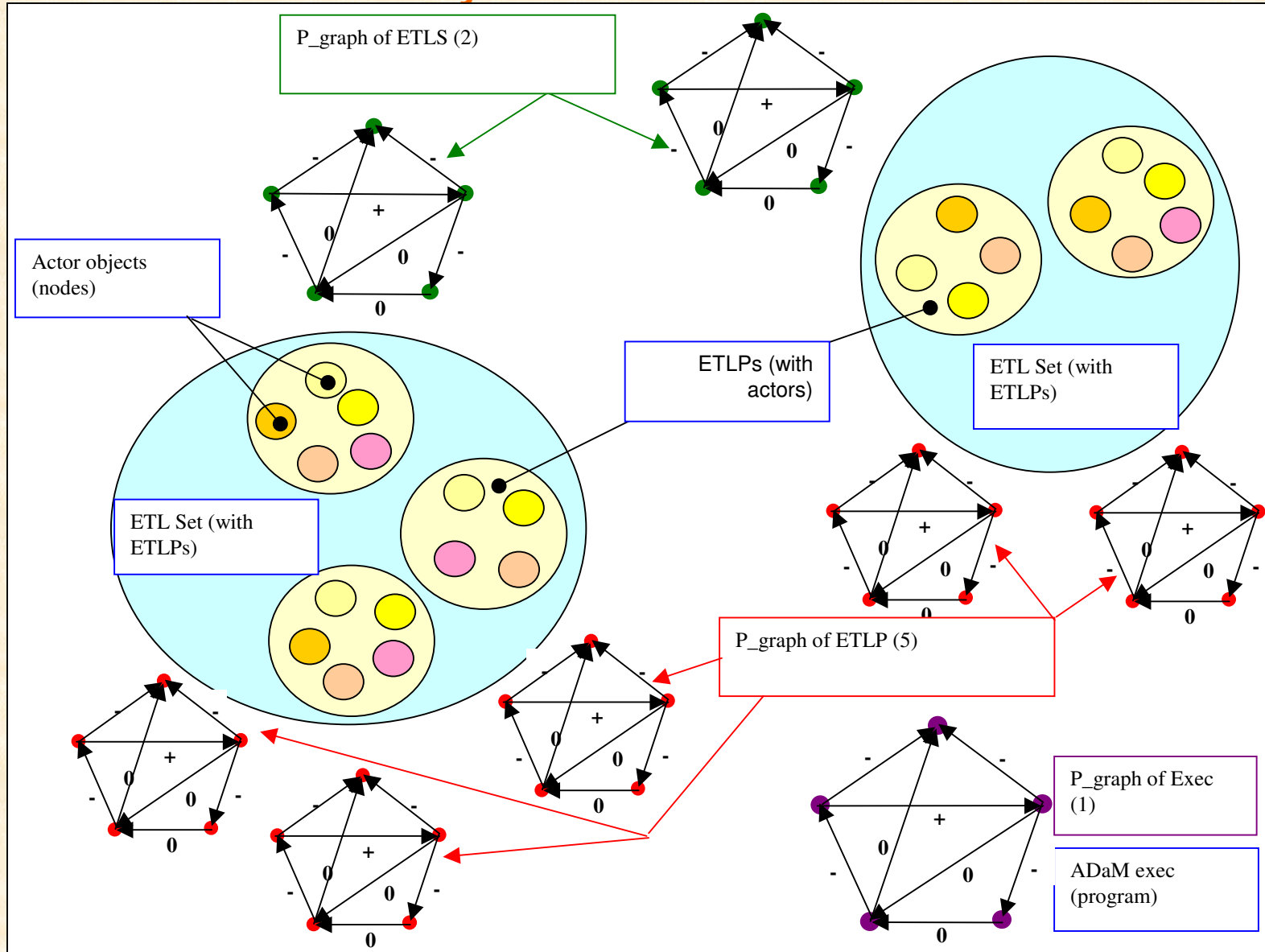
Fall-Back Value: Emergency public alerts and First-Responder capabilities

**Just hunting for substances/persons at checkpoints with high-tech
and aiming for panaceas and Holy Grails of “Total Information Awareness”
Ain't Good Enuf !**

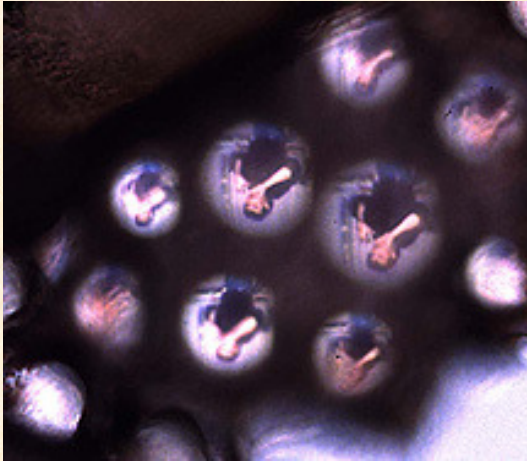
Nomad Eyes™ Architecture and Principles (II)



Why it works so well



Nomad Eyes = Compound Eyes



Multiple TYPES of sensor data

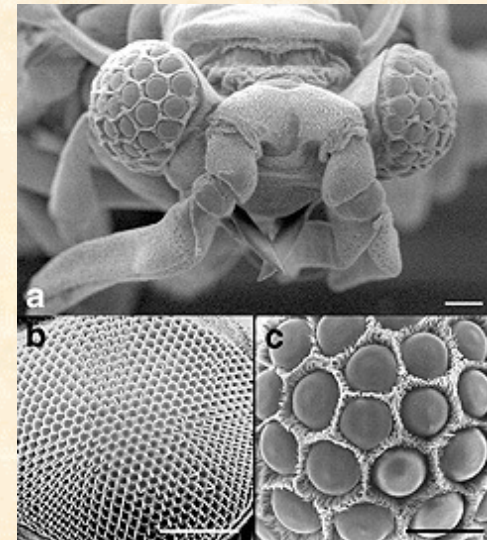
Multiple INSTANCES at multiple TIMES

INVERSE Methods applied “as if” in surface/subsurface imaging:

the task is to find what events and processes may be the modifiers of known or deducible behaviors

USING

- Abductive rules
- Bayesian probabilistic inference
- Fuzzy inference
- Heuristics and “common sense” rules



For all the value of sophisticated detectors, an “outlier” element or two could make all the difference:

Requests for building or water/sewer line plans

Repeat-visits of unusual vehicle or people

“Non-sequitur” orders of shielding-quality materials

Unusual change in shipping order or pickup

Deployment - Where and How

- Static but ad-hoc
 - Passage locations and nexus points for cargo and transfer vehicles
 - Likeliest places but not limited to one configuration
- Pseudo-random
- Personal mobile units
 - Assigned to staff personnel
 - Personal cell phones
- Unpredictable - a “two-edged sword” that cuts in in favor of the Defenders
 - Inverse predictive models can be applied better to the data “mass”
 - Al Qaeda (or “X”) cannot predict where are our eyes and ears
- Sun Tzu (“Art of War”) - Always Make Your Enemy *Nervous*

Current Status

Building networks and relationships in Richmond business and civic community

IRAD program (1999 – 2004)

I³BAT Phase 1

Sensors, phones, wi-fi networks ready

ADaM prototype completed

OpenNet prototype completed

Collaboratory prototype completed

Aim to have a Core Advocacy Team of Richmond Community

Leaders from:

Corporations (Financial, Telecomms, IT, Healthcare)

State and Local government

Universities

Private NGOs

Individual sponsors

Goal for RICHMOND, Virginia

Model/test system in the field in 2005 by JULY
Corporate support First, federal/state grants later for expansion
Make it Profitable

Achieve some FIRSTS – reductions in gang violence, domestic violence, and demonstrable SAFETY NET for CRBN terrakts

“Export” to other cities, states

Acknowledgements

By no means do we claim that those we learn from or work with agree with all of this, but thanks is due to more than a few...

- Peter Cavanagh, Cambridge Security Programme www.csp.ac.uk
- Dr. Marc Sageman, MD
- Boaz Ganor, Institute for Counterterrorism Policy, Haifa, Israel
- Eric Miller, David Castanon, Clem Karl, CENSSIS
- Eric Klopfer, Henry Jenkins, MIT
- Tamara Koval, MD, Forte Horizons LLC
- George Carr, Zurich, CH
- Robert Newman, Office of Commonwealth Preparedness, Virginia
- Michael Chandler, Institute for Strategic Studies, Singapore
- General A. S. Kulikov, Duma of the Russian Federation
- Mark Hopkins, ST Microelectronics SA

Contacts

Martin Dudziak, PhD

(804) 740-0342 office

(202) 415-7295 cell

martin@forteplan.com

<http://tetradgroup.com>