



Pandemic/ID-related Projection Maps  
generated by CRAIDO \*

TETRADYN

8.Sept.2009

\* Community Rapid Response for Infectious Disease Outbreaks

9/15/2009

1



This document contains selected screenshots from some of the output generated within CRAIDO and the VSRB (Virtual Sample Bank Repository).

Please note that these are the results of simulations and are not derived from actual in-the-field clinical diagnostic events.

These exemplify the results of complex but rigorous analytical functions applied to realtime data collected from several sources including the CRAIDO labstations that perform multispectral data fusion on pathogen samples, including the use of RT-PCR for rapid sequencing and typing.

Note that CRAIDO is not only about laboratory diagnostics but about what one does with data in order to be able to look ahead (and “sideways”) in order to better plan logistics and tactics for achieving what some term “social resilience.”



# AwareIntel

Your Web with Meaning

[Alerts](#) [Findings](#) [Forecasts](#) [Indicators](#) [Maps](#)

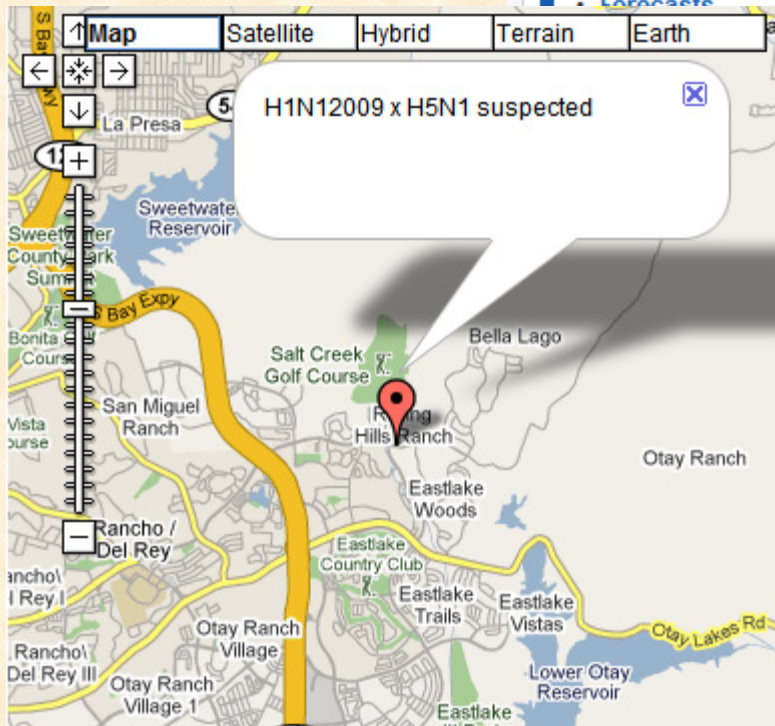
[Home](#) >> [Indicators](#) >> [Infection](#) >> San Diego CRAIDO H1N1 report 32.Sept.2009

### Main Menu

- [Home](#)
- [Alerts](#)
- [Findings](#)
- [Indicators](#)
- [Forecasts](#)

### Latest Items

- [San Diego CRAIDO H1N1 report 32.Sept.2009](#)
- [Output, CRAIDO, dd.mm.yy - MADIT indicators of mutation H1N1-2009\(b\)](#)
- [output from CRAIDO on location of mutant strain H1N1+x](#)
- [Map # 2](#)
- [Map # 1](#)



## San Diego CRAIDO H1N1 report 32.Sept.2009

Written by Administrator

Wednesday, 09 September 2009 15:03

(Dates are altered so that readers (human and system (internal bots; binars)) note that this is simulated and not actual data)

[\[Please re-read the last phrase, folks\]](#)



### Login

Username

Password





Output from San Diego Region CRAIDO (IDODB) - 1500GMT:  
 329 new confirmed H1N1-2009 diagnoses. (+13% / 48 hrs.)  
 826 new tentative cases. (+9% / 48 hrs.)  
 Estimated inpatients: 1024. (+11% / 48 hrs.)  
 Estimated stage 1 - 3: 12,647. (+10% / 48 hrs.)

**16 detections of suspected mutant class H1N1-2009x(H5N1). High Alert.**

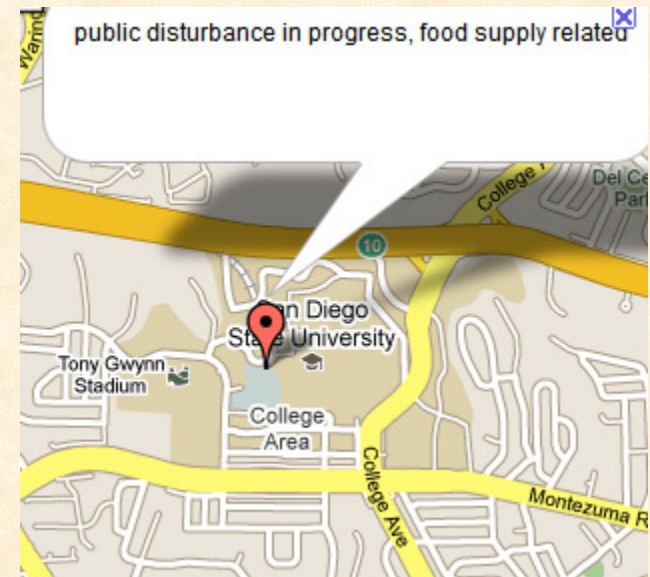
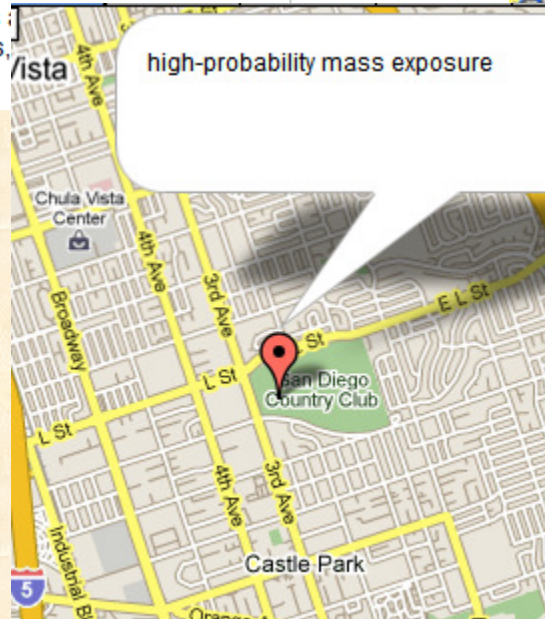
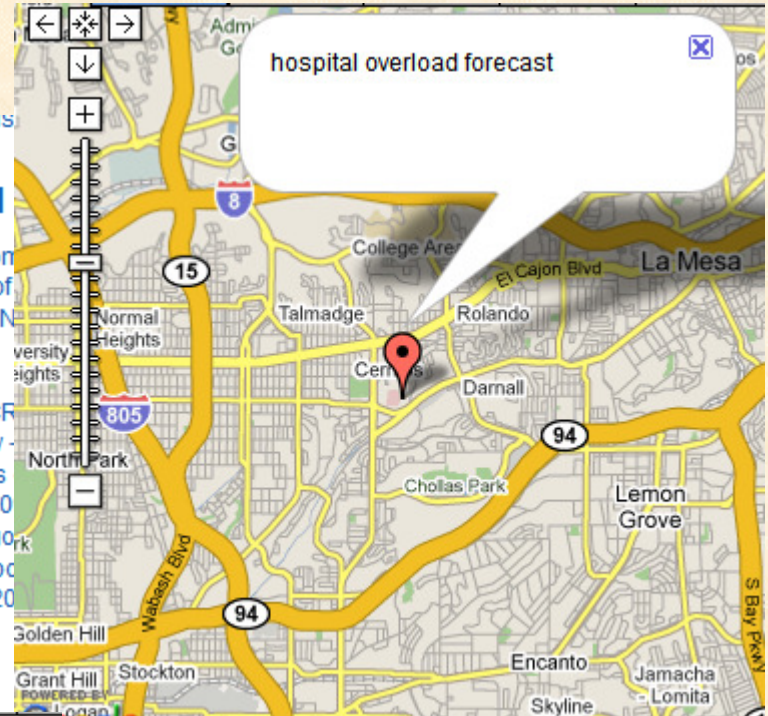
(This special alert data will be auto-linked to other resources within AI (AwareIntel, this portal), including technical and scientific papers and source-statistics generated from the RT-PCR instruments and the MADIT modules. Note that not all AI-generated data will be available to CCP (CUBIT-CRAIDO Public Portal) users, for social stability reasons.)

Map types available are/will be similar to this (below) but in KRL format with multiple locators available. Maps can show locations of detected and suspected infections, also neighborhoods, centers, commerce centers, schools, hospitals, playgrounds, factories, offices, power plants.

• Forgot your us

### Most-Read

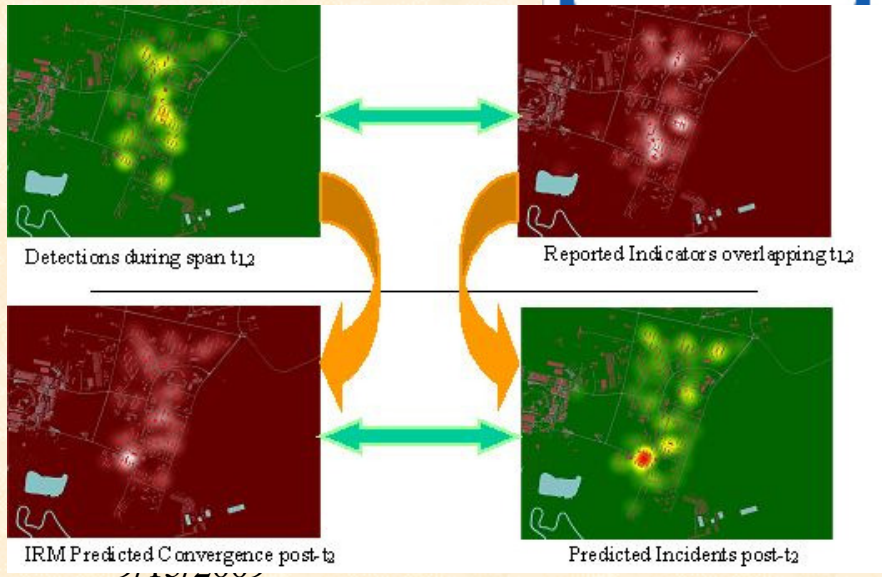
- output from location of strain H1N1
- Map # 1
- Map # 2
- Output, CR dd.mm.yy indicators H1N1-200
- San Diego H1N1 rep 32.Sept.20



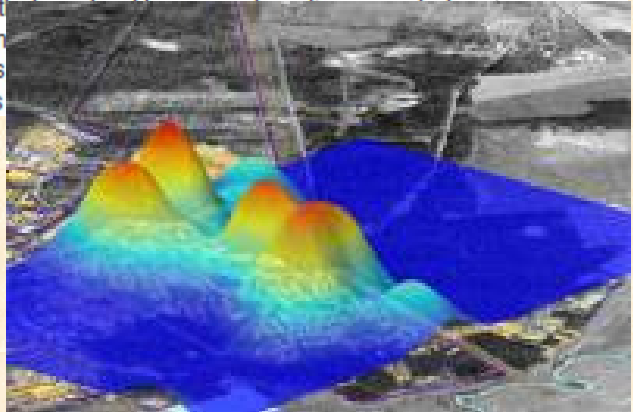
9/15/2009

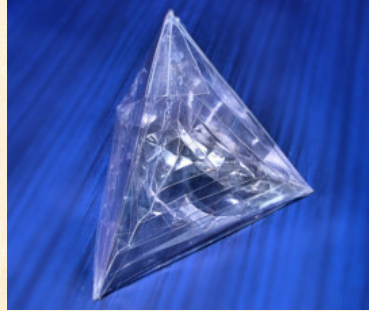


Now what an unusual idea, to incorporate what people think, the public, the “masses” and to use a few phase changes and differentials derived therefrom, to add into the equation along with quantitative data from diagnostic immunoassay and sequencing tests, in order to modulate the projections about what may be likely to happen in a community like yours, affecting the spread of a viral infection, and the availability of vaccines and medications, and the general sustainability and resilience of the Social Contract?



see how different outcomes





Contact TETRADYN

<http://tetradyn.com>

**Project Management & Business Development**

[jmcginnis@forteplan.com](mailto:jmcginnis@forteplan.com), [jobermoller@tetradyn.com](mailto:jobermoller@tetradyn.com)

(704) 351-0342 (704) 609-8951

**Technical**

[martinjd@tetradyn.com](mailto:martinjd@tetradyn.com), [martin.dudziak@gmail.com](mailto:martin.dudziak@gmail.com)

(757) 847-5511 office, (202) 415-7295 cell, (804) 740-0342 msgs

9/15/2009

6